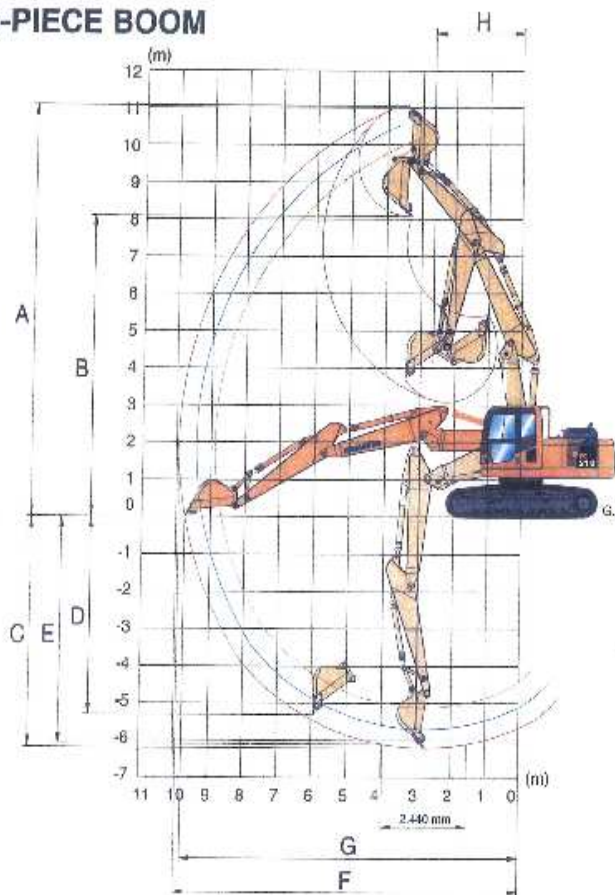




TWO-PIECE BOOM



Type	Ductile Iron Piling Rig	
Dimensions	Height – Tracking	3.035m
	Height - Operating	Approx + 9.0 m
	Width	2.70m
	Length	4.08m
	Weight – Tractor	22 tonnes
	Power	110 kW
Delivery	By lorry or trailer	
Hydraulics	Max flow 2 x 219 litres/min	
Standard set up	MB1200 or MB1700	
	Atlas Copco breaker hammer	
Maximum Reach	With hammers above, reach is approx 8m from centre line of machine cab to pile centre line.	
Comments	Ductile iron piling can be utilised as a small displacement/low vibration option for many applications including retail, housing, commercial and railway projects.	
	For railway bridge installations the piles can be driven with a rail-capable machine in restricted headroom conditions between 2.4 – 4.4m	
	Piles can be driven plain or grout-surrounded.	