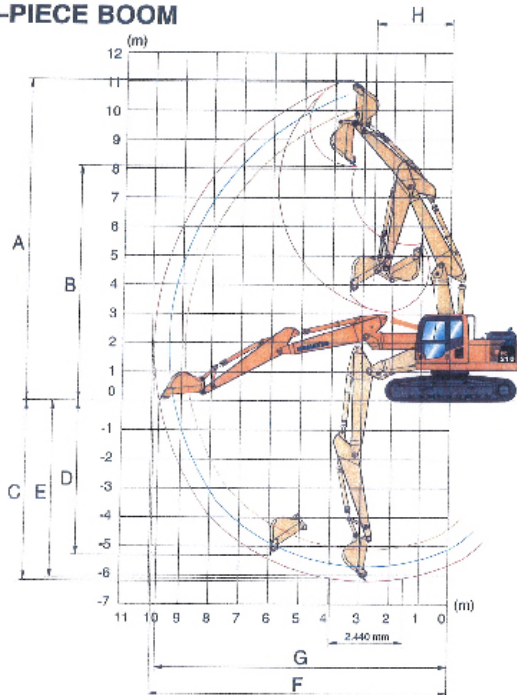




TWO-PIECE BOOM



Type	Ductile Iron Piling Rig	
Dimensions	Height – Tracking	3.035m
	Height - Operating	Approx +9m
	Width	0.70-5mm
	Length	2.700m
	Weight – Tractor	4.08m
Power	110 KN	
Delivery	By lorry or trailer	
Hydraulics	Max flow 2 x 219 litres/min	
Standard set up	MB1200 or MB1700	
	Atlas Copco hammer	
Maximum Reach	with hammer approx 8m from centre line of cab to pile centre line	
Comments	Ductile iron piling can be utilised as a small displacement/low vibration option for many applications including retail, housing, commercial and railway projects. The piles can be driven in restricted headroom conditions between 2.4 – 4.4m	